



BXUV.U381 Fire Resistance Ratings - ANSI/UL 263

[Page Bottom](#)

Design/System/Construction/Assembly Usage Disclaimer

- Authorities Having Jurisdiction should be consulted in all cases as to the particular requirements covering the installation and use of UL Listed or Classified products, equipment, system, devices, and materials.
- Authorities Having Jurisdiction should be consulted before construction.
- Fire resistance assemblies and products are developed by the design submitter and have been investigated by UL for compliance with applicable requirements. The published information cannot always address every construction nuance encountered in the field.
- When field issues arise, it is recommended the first contact for assistance be the technical service staff provided by the product manufacturer noted for the design. Users of fire resistance assemblies are advised to consult the general Guide Information for each product category and each group of assemblies. The Guide Information includes specifics concerning alternate materials and alternate methods of construction.
- Only products which bear UL's Mark are considered as Classified, Listed, or Recognized.

Fire Resistance Ratings - ANSI/UL 263

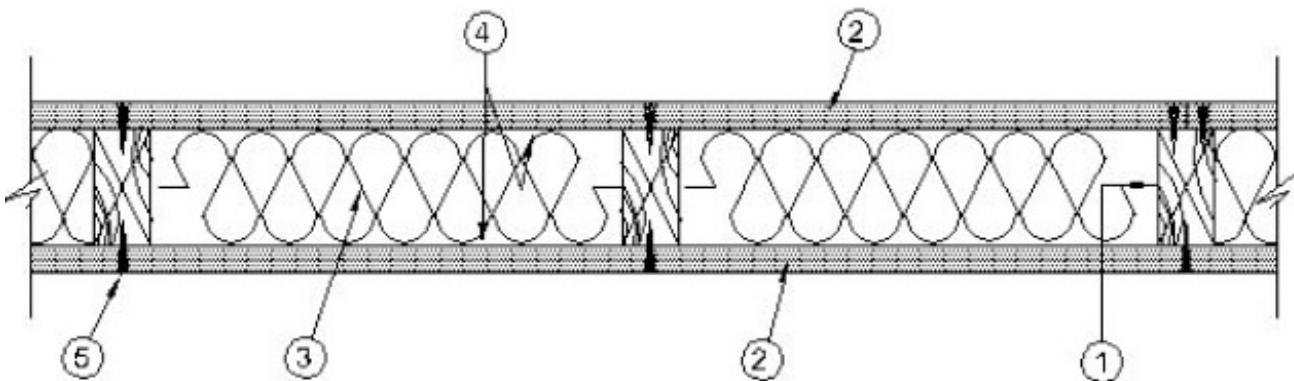
[See General Information for Fire Resistance Ratings - ANSI/UL 263](#)

Design No. U381

November 06, 2006

Bearing Wall Rating — 45 min

Finish Rating — 18 min



1. **Wood Studs** — Nom 2 by 4 in., spaced 16 in. OC, effectively braced at mid-height and firestopped at top and bottom.

2. **Gypsum Wallboard*** — 5/8 in. thick, 4 ft wide, applied vertically, screw attached to studs with 1-1/2 in. long Type S steel screws, spaced 7 in. OC. One face installed prior to application of foamed plastic (Item 3).

CANADIAN GYPSUM COMPANY — Type SCX

3. **Foamed Plastic*** — Spray applied, foamed plastic insulation, to completely filling stud cavity.

HOME INSULATION CORP — Home Foam or Insulthane 100

4. **Vapor Barrier** — (Optional) — Commercial polyethylene vapor barrier, 6 mil (max) thickness.

5. **Joints and Screwheads** — Wallboard joints covered with paper tape and joint compound. Screw heads covered with joint compound.

*Bearing the UL Classification Mark

Last Updated on 2006-11-06

Questions?

Notice of Disclaimer

Page Top

Copyright © 2009 Underwriters Laboratories Inc.®

The appearance of a company's name or product in this database does not in itself assure that products so identified have been manufactured under UL's Follow-Up Service. Only those products bearing the UL Mark should be considered to be Listed and covered under UL's Follow-Up Service. Always look for the Mark on the product.

UL permits the reproduction of the material contained in the Online Certification Directory subject to the following conditions: 1. The Guide Information, Designs and/or Listings (files) must be presented in their entirety and in a non-misleading manner, without any manipulation of the data (or drawings). 2. The statement "Reprinted from the Online Certifications Directory with permission from Underwriters Laboratories Inc." must appear adjacent to the extracted material. In addition, the reprinted material must include a copyright notice in the following format: "Copyright © 2009 Underwriters Laboratories Inc.®"

An independent organization working for a safer world with integrity, precision and knowledge.

